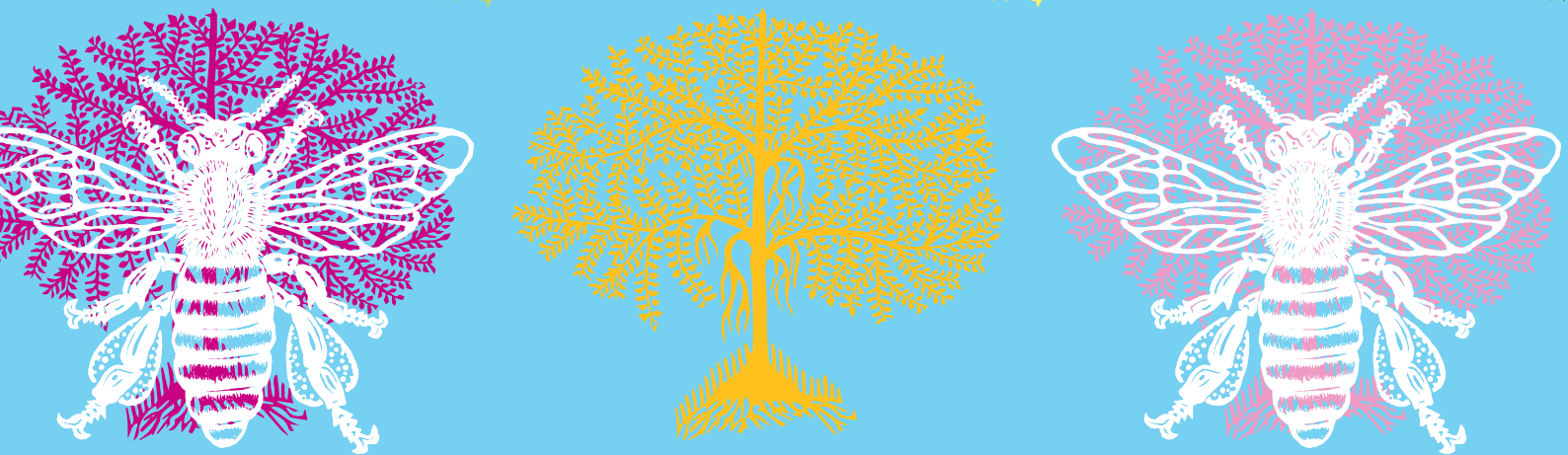




REGENERATIVE CULTURE

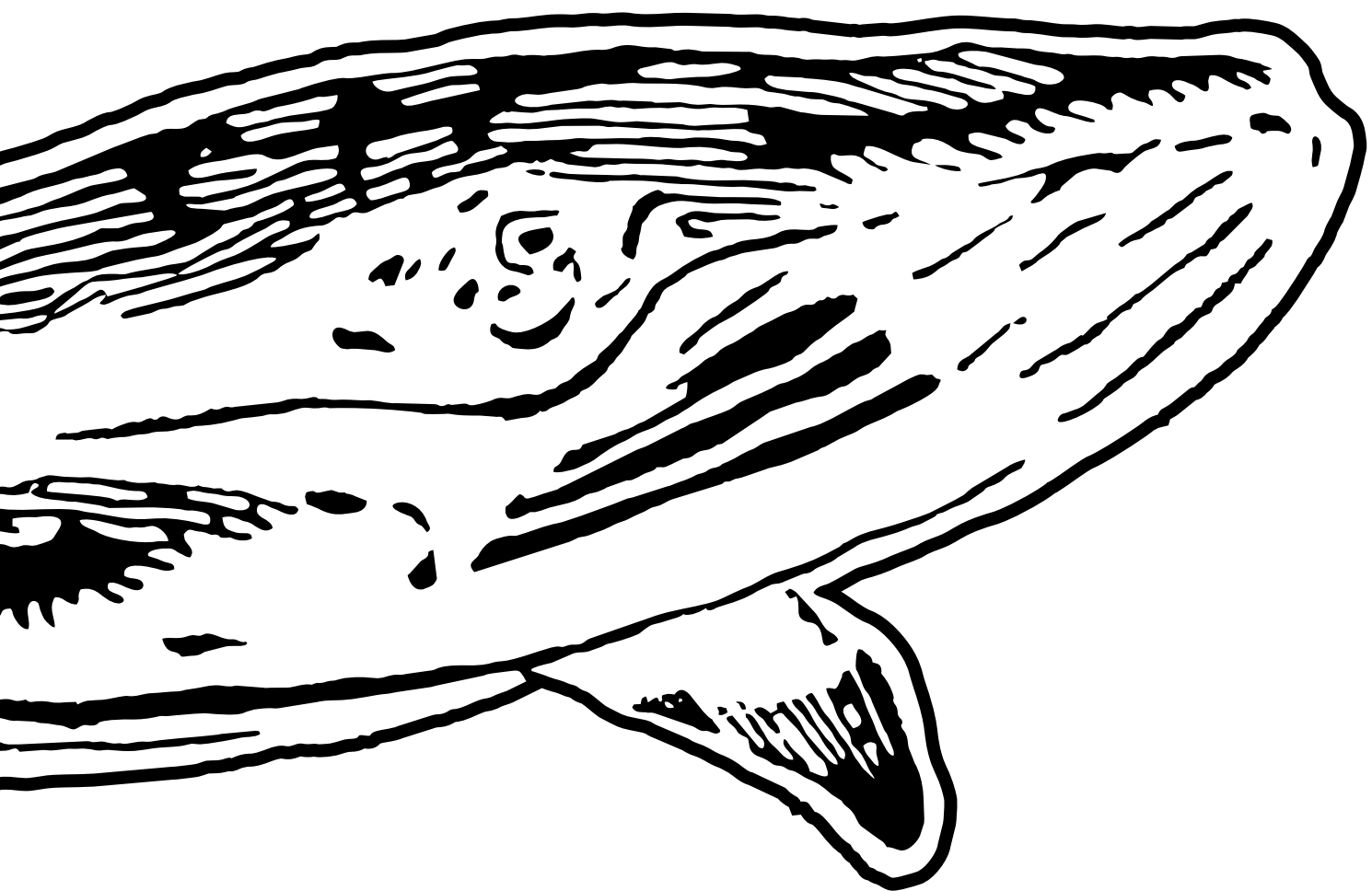
REGEN 101 COLOURING BOOK



HUMPBACK WHALE

The humpback whale is a species of baleen whale. One of the larger rorqual species, adults range in length from 12–16 m (39–52 ft) and weigh around 25–30 metric tons (28–33 short tons). The humpback has a distinctive body shape, with long pectoral fins and a knobby head. It is known for breaching and other distinctive surface behaviors, making it popular with whale watchers. Males produce a complex song lasting 10 to 20 minutes, which they repeat for hours at a time. All the males in a group will produce the same song which is different each season. Its purpose is not clear, though it may have a role in mating by inducing estrous.





BLACK-FLANKED ROCK-WALLABY

*The black-flanked rock-wallaby (*Petrogale lateralis*), also known as the black-footed rock-wallaby or warru, is a species of wallaby, one of several rock-wallabies in the genus *Petrogale*.*



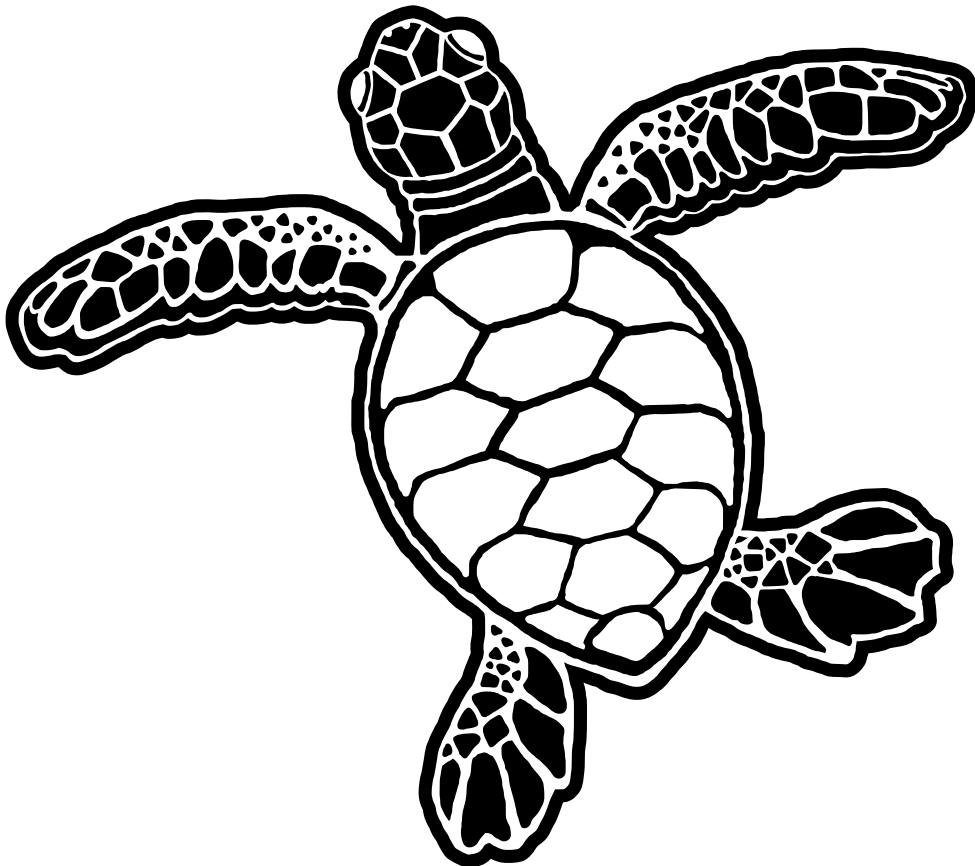
HONEY BEE

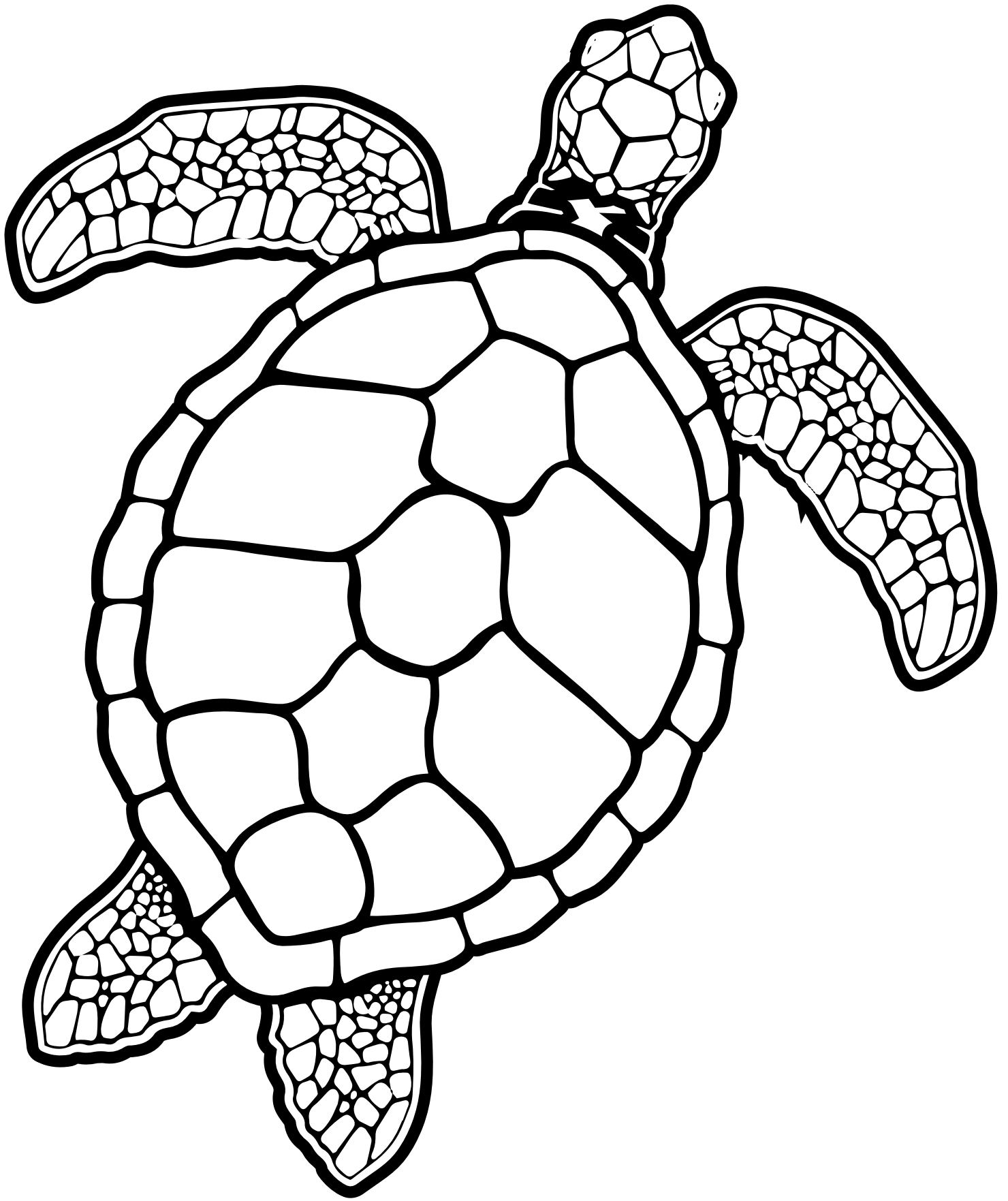
*A honey bee (also spelled honeybee) is a eusocial flying insect within the genus *Apis* of the bee clade, all native to Eurasia but spread to four other continents by human beings.*



GREEN SEA TURTLE

The green sea turtle, also known as the green turtle, black (sea) turtle or Pacific green turtle, is a species of large sea turtle of the family Cheloniidae. It is the only species in the genus Chelonia. Its range extends throughout tropical and subtropical seas around the world, with two distinct populations in the Atlantic and Pacific Oceans, but it is also found in the Indian Ocean. The common name refers to the usually green fat found beneath its carapace, not to the color of its carapace, which is olive to black.





GOULDIAN FINCH

The Gouldian finch, also known as the Lady Gouldian finch, Gould's finch or the rainbow finch, is a colourful passerine bird which is native to Australia. Their numbers have decreased quite dramatically during the 20th century. Their habitat has been reduced and their beautiful colours mean that they are easily caught by predators. Fires are the primary threat to the natural population.



SWALLOWTAIL BUTTERFLIES

Swallowtail butterflies are large, colorful butterflies in the family Papilionidae, and include over 550 species. Though the majority are tropical, members of the family inhabit every continent except Antarctica. The family includes the largest butterflies in the world, the birdwing butterflies of the genus Ornithoptera.



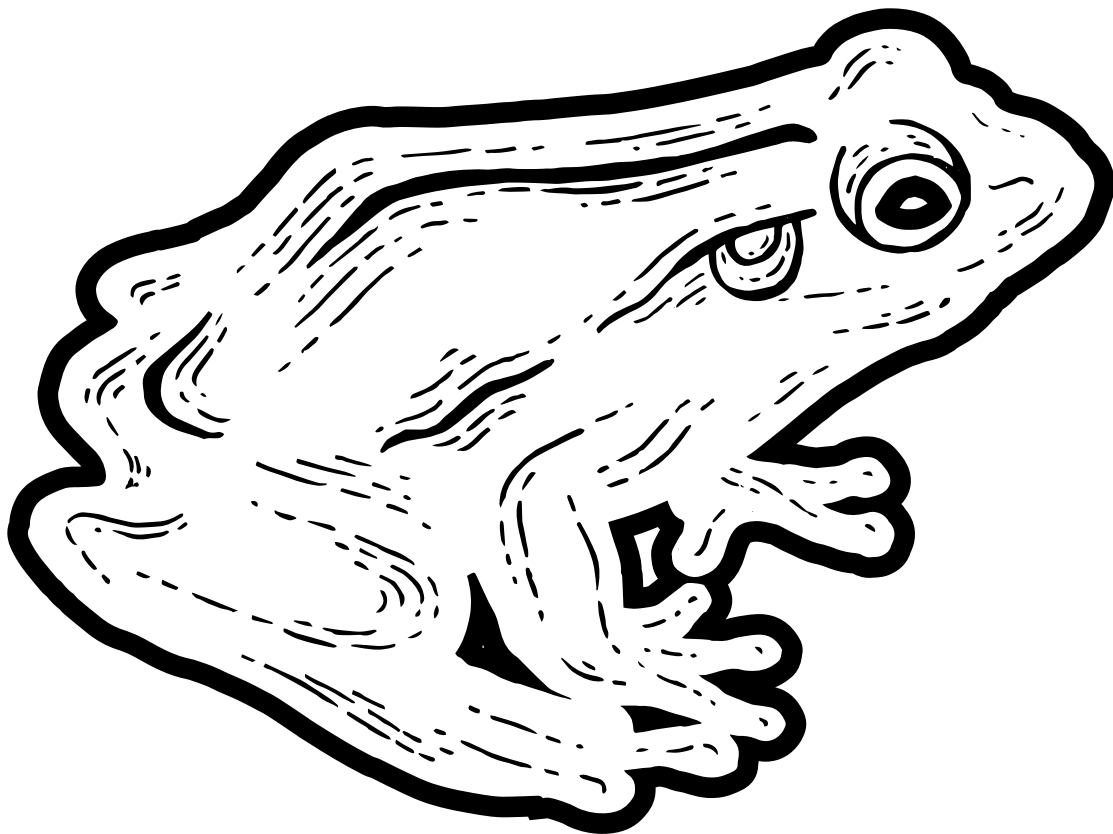
TIGER QUOLL

*The tiger quoll, also known as the spotted-tail quoll, the spotted quoll, the spotted-tail dasyure or the tiger cat, is a carnivorous marsupial of the quoll genus *Dasyurus* native to Australia. With males and females weighing around 3.5 and 1.8 kg, respectively, it is mainland Australia's largest carnivorous marsupial, and the world's longest extant carnivorous marsupial (the biggest is the Tasmanian devil). Two subspecies are recognised; the nominate is found in wet forests of southeastern Australia and Tasmania, and a northern subspecies, is found in a small area of northern Queensland and is endangered.*



BOOROOLONG FROG

*The Booroolong frog (*Ranoidea booroolongensis*) is a species of stream-dwelling frog native to the western slopes and ranges of New South Wales and northern Victoria. It is normally grey, olive, or brown with pale spots or mottling, normally slightly warty in appearance, and the flanks are grey. It is cream on the ventral surface. The back of the thighs are pale yellow a few darker spots. A faint stripe runs from the nostril to above the tympanum; this stripe is pale and thin in contrast to the closely related stony creek frog and Lesueur's frog, and can be used to distinguish between the species. The tympanum is darker in colour. The armpit is also pale yellow. The toe discs are relatively well developed, but only of a moderate size. The toes are nearly fully webbed.*



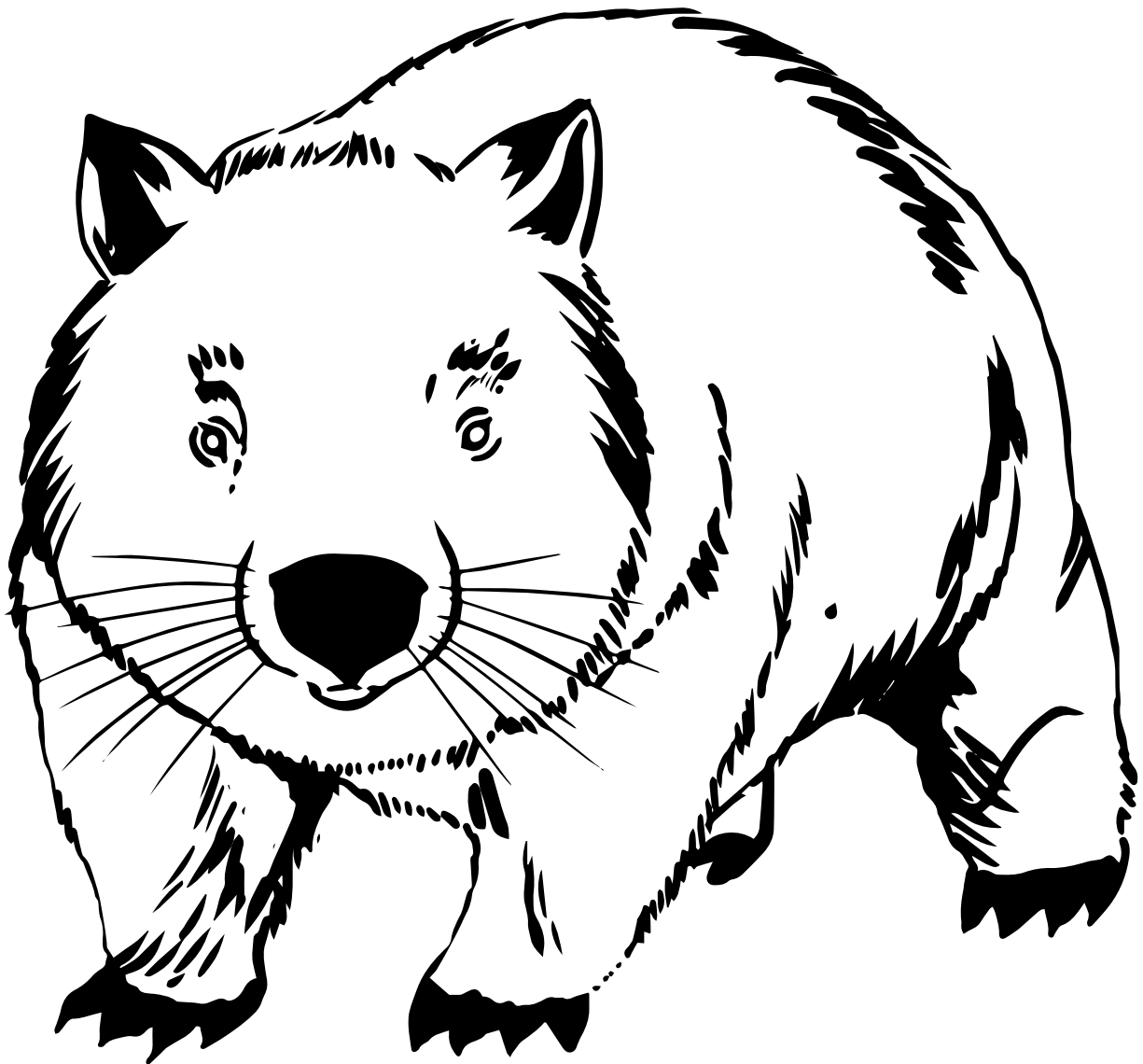
GREATER GLIDER

The greater glider is a small gliding marsupial found in Australia. It is nocturnal and is a solitary herbivore feeding almost exclusively on Eucalyptus leaves and buds. Like its relative the lemur-like ringtail, the greater glider is found in two forms: a sooty brown form, or a grey-to-white form. The greater glider is found in eucalypt forest from Mossman, Queensland, to Daylesford, Victoria.



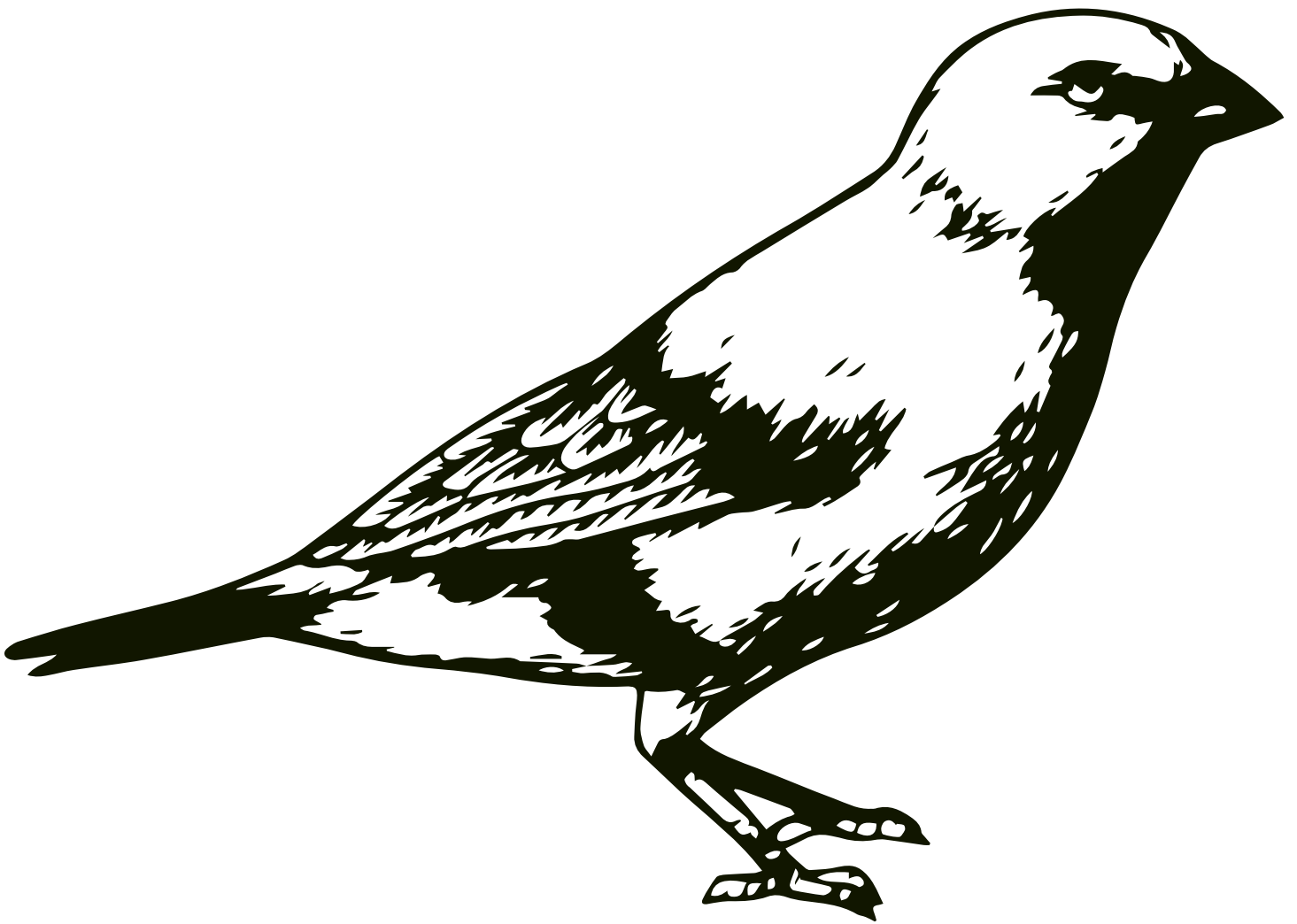
NORHTERN HAIRY-NOSED WOMBAT

The northern hairy-nosed wombat is one of three extant species of wombats. It is one of the rarest land mammals in the world and is critically endangered. Its historical range extended across New South Wales, Victoria, and Queensland as recently as 100 years ago, but it is now restricted to one place, a 3-km² range within the 32-km² Epping Forest National Park in Queensland. In 2003, the total population consisted of 113 individuals, including only around 30 breeding females. In the last census taken in 2013, the estimated population was 196 individuals, with an additional 9 individuals at the Richard Underwood Nature Refuge at Yarran Downs near St. George in southern Queensland. In recent years, the population has experienced a slow but steady increase to an estimated 230 individuals in 2015.



BLACK THROATED FINCH

The black-throated finch (Poephila cincta), or parson finch, is found in grassy woodlands throughout north-east Australia from Cape York Peninsula to central Queensland. Its population is declining, having become extinct in New South Wales, and its habitat is threatened by development.





CARNABY'S BLACK COCKATOO

Carnaby's black cockatoo (Calyptorhynchus latirostris), also known as the short-billed black cockatoo, is a large black cockatoo endemic to southwest Australia. It was described in 1948 by naturalist Ivan Carnaby. Measuring 53–58 cm (21–23 in) in length, it has a short crest on the top of its head. Its plumage is mostly greyish black, and it has prominent white cheek patches and a white tail band. The body feathers are edged with white giving a scalloped appearance. Adult males have a dark grey beak and pink eye-rings. Adult females have a bone-coloured beak, grey eye-rings and ear patches that are paler than those of the males.



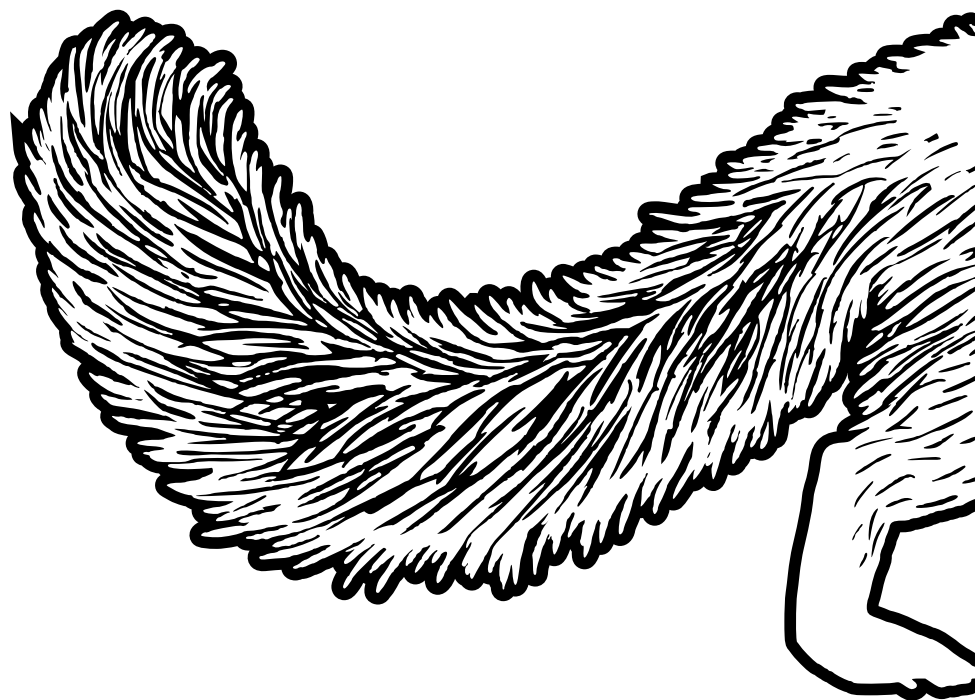
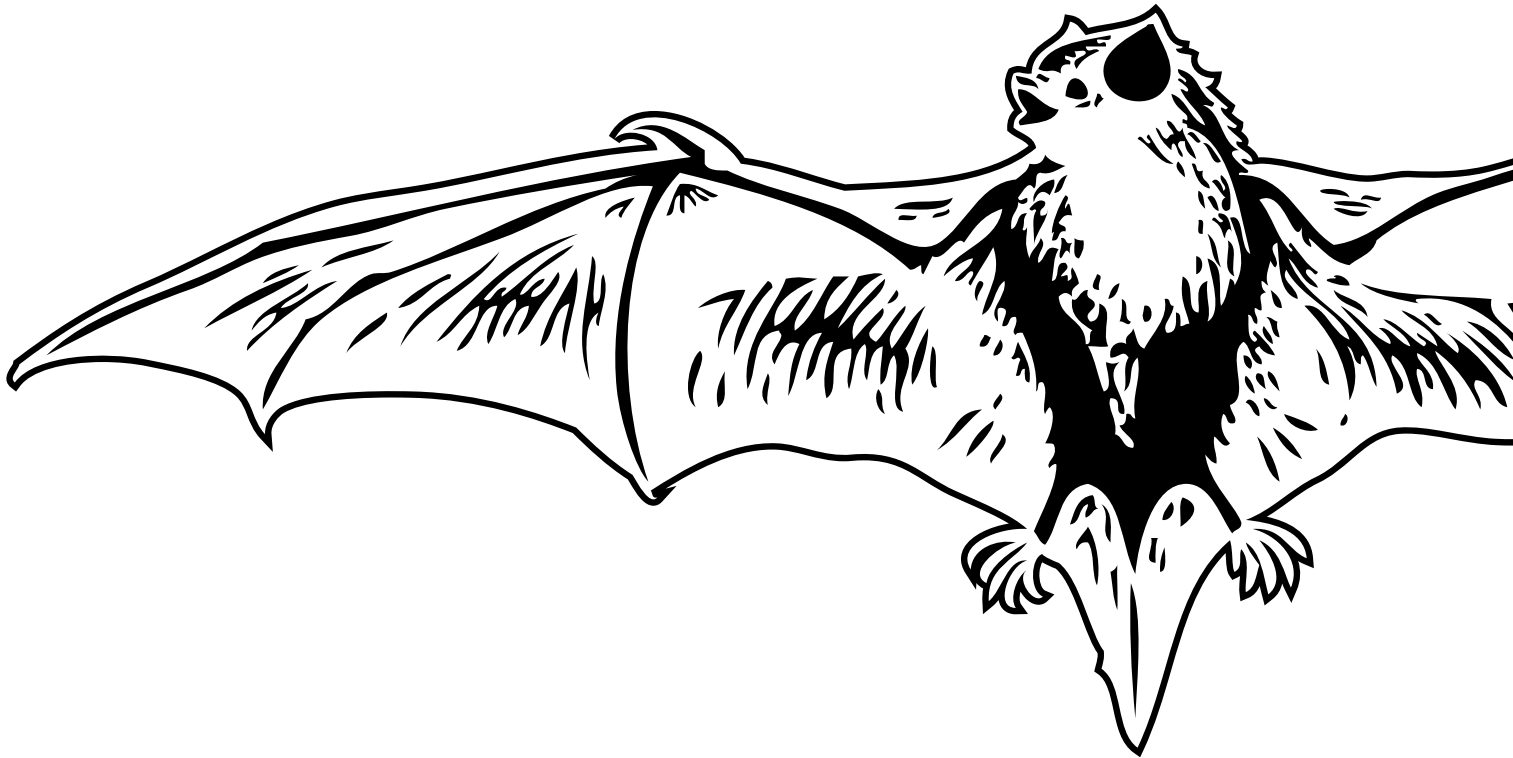
KANGAROO

The kangaroo is a marsupial from the family Macropodidae (macropods, meaning “large foot”). In common use the term is used to describe the largest species from this family, especially those of the genus Macropus: the red kangaroo, antilopine kangaroo, eastern grey kangaroo, and western grey kangaroo. Kangaroos are indigenous to Australia.



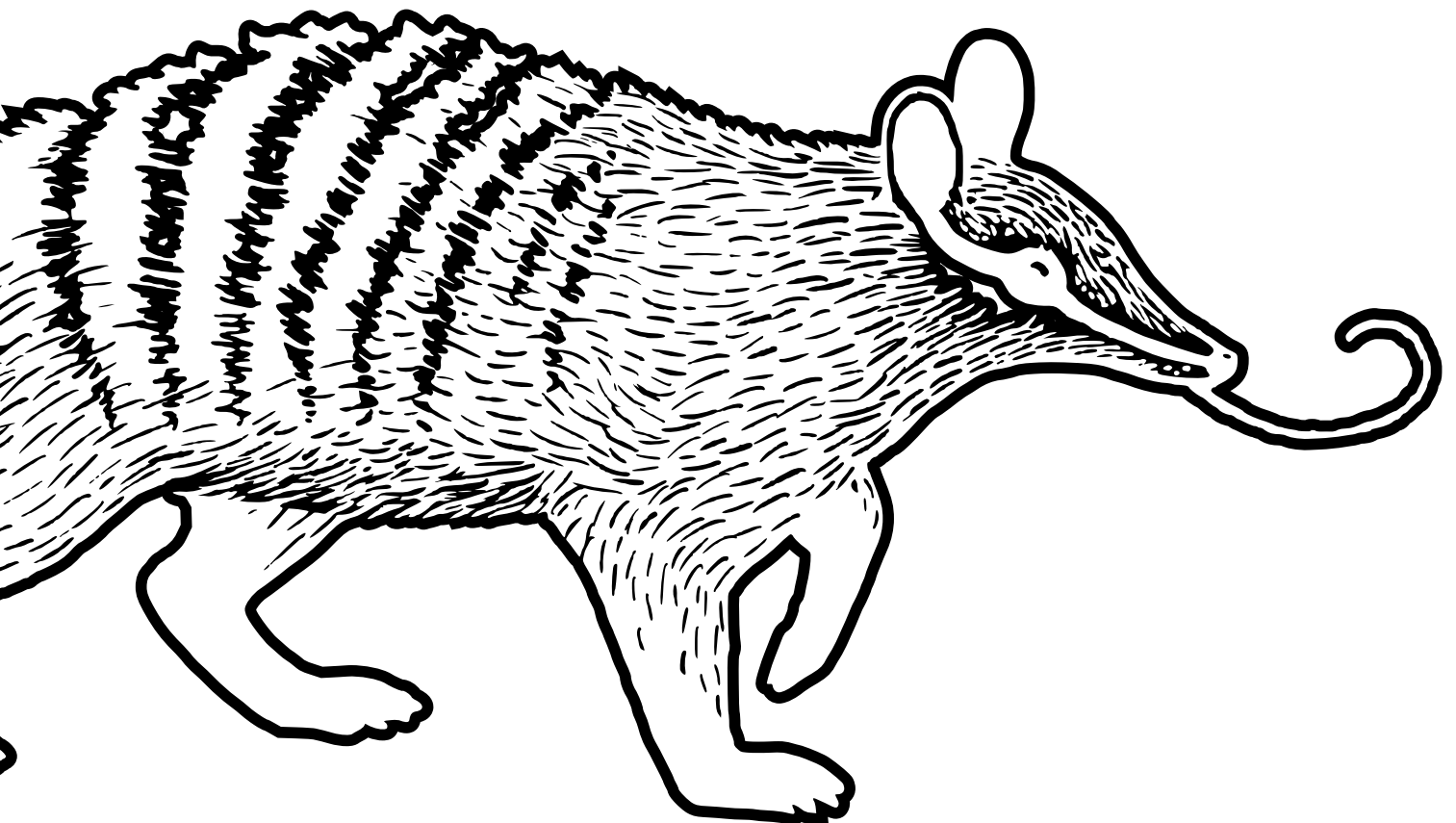
SOUTHERN BENT-WING BAT

The southern bent-wing bat (*Miniopterus orianae bassanii*) is one of two subspecies of the Australasian bent-wing bat.[1] Its population size has declined rapidly since the 1950s, and it is classified as critically endangered by the Australian government.



NUMBAT

Numbat – Myrmecobius fasciatus – is an insectivorous marsupial native to Western Australia and recently re-introduced to South Australia. The species is also known as noombat or walpurti. Its diet consists almost exclusively of termites. Once widespread across southern Australia, its range is now restricted to several small colonies and it is considered an endangered species. The numbat is an emblem of Western Australia and protected by conservation programs.





extinction
rebellion